

# PECAPLASTY®

PERCUTANEOUS BUNION CORRECTION



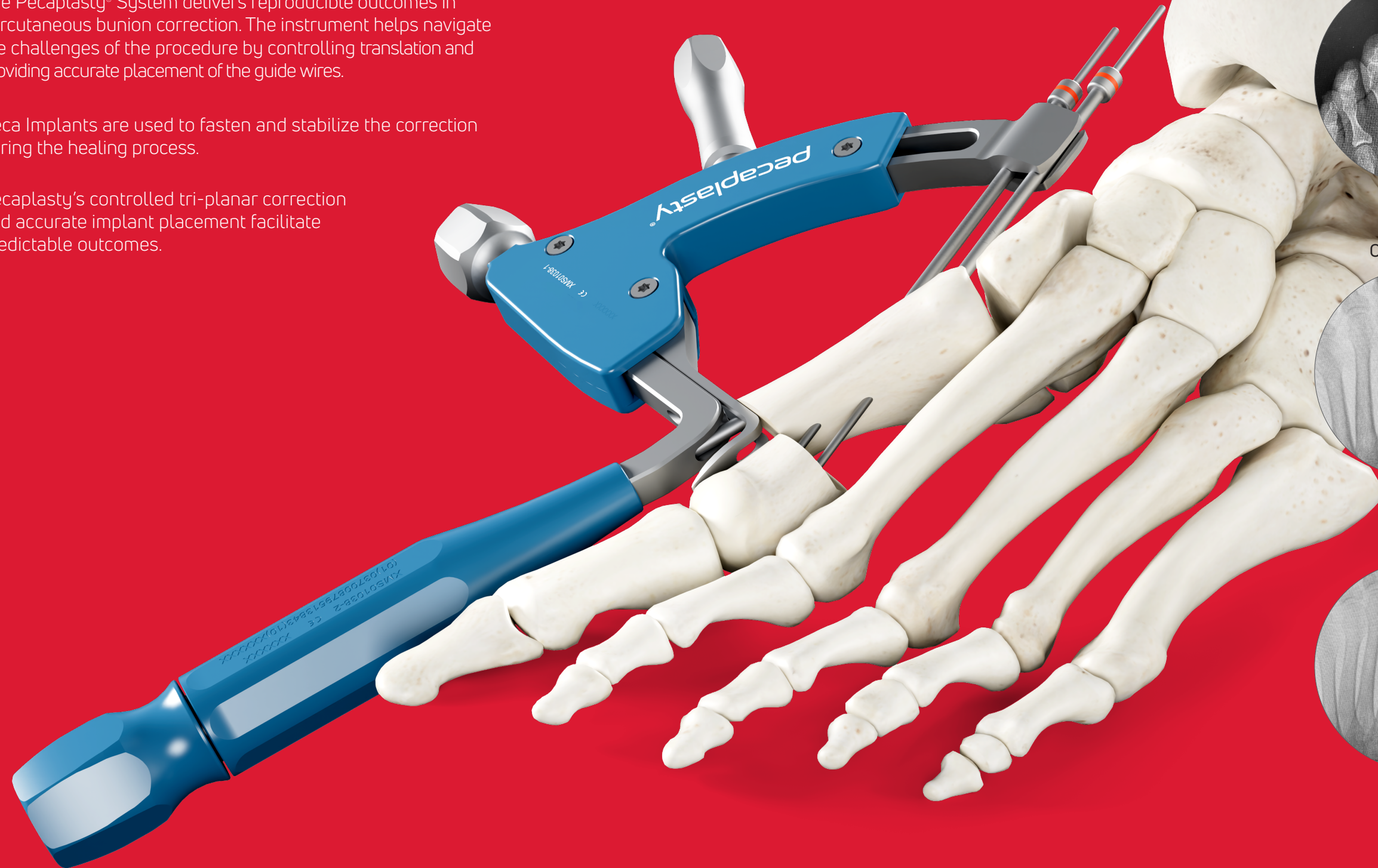
enovis™

# PREDICTABLE.

The Pecaplasty® System delivers reproducible outcomes in percutaneous bunion correction. The instrument helps navigate the challenges of the procedure by controlling translation and providing accurate placement of the guide wires.

Peca Implants are used to fasten and stabilize the correction during the healing process.

Pecaplasty's controlled tri-planar correction and accurate implant placement facilitate predictable outcomes.



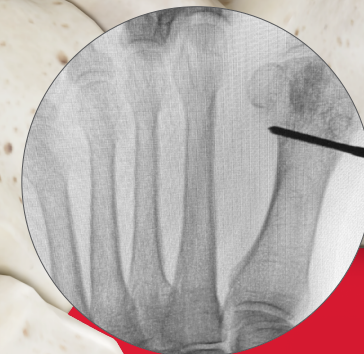
PRE-OP



POST-OP



OSTEOTOMY



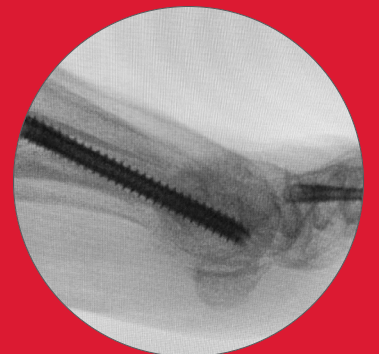
TRANSVERSE



FRONTAL

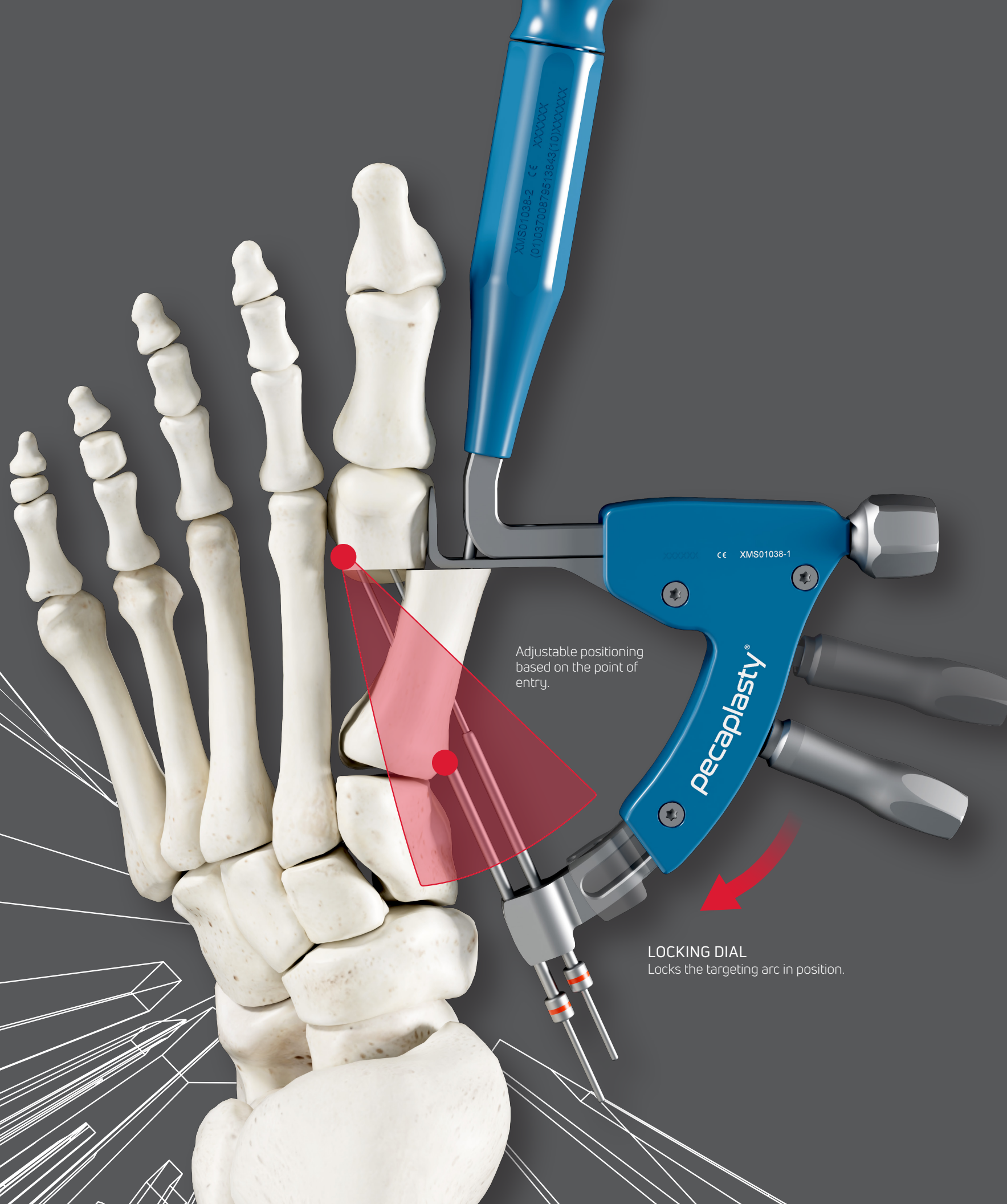


SAGITTAL



# ACCURATE.

The "Sure-Shot" targeting arc enhances the surgeon's ability, like a marksman, to position Peca Implants. The design ensures a safe distance between where the proximal Peca implant exits the lateral cortex from the osteotomy.

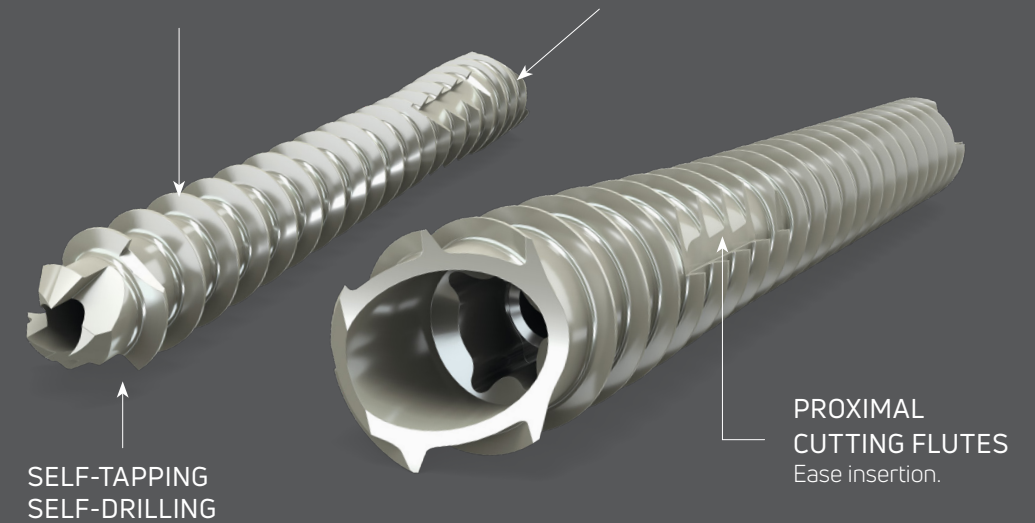


Adjustable positioning based on the point of entry.

**LOCKING DIAL**  
Locks the targeting arc in position.

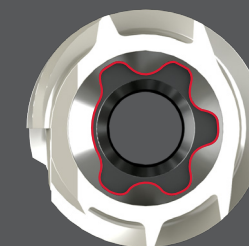
**FULLY THREADED, CONSTANT PITCH**  
Facilitates purchase for stable fixation.

**40 DEGREE CHAMFER CUT HEAD:**  
Anatomically contours to the medial cortex of the first metatarsal.



**SELF-TAPPING SELF-DRILLING**

**PROXIMAL CUTTING FLUTES**  
Ease insertion.



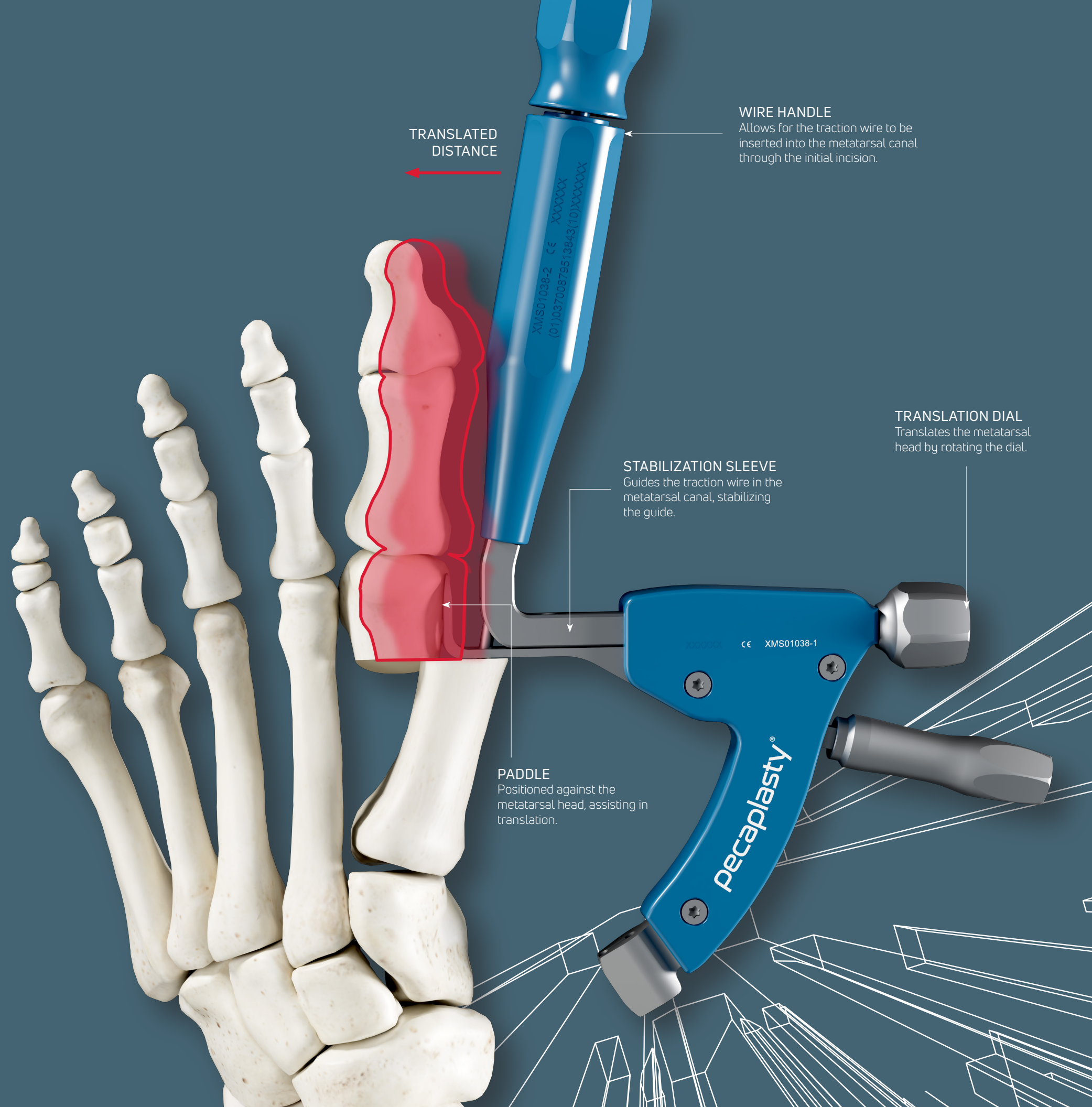
**EXACT-T® RECESS**  
Allows Exact driver positioning and provides optimal torque.

# CONTROLLED.

The freedom paddle offers full tri-planar control to the surgeon. With the device positioned medially, the surgeon has the freedom to manipulate the transverse, frontal, and sagittal planes, in addition to the DMAA, which would otherwise be limited by a transfix pin into the head.



CONTROLLED  
TRI-PLANAR  
CORRECTION



TRANSLATED  
DISTANCE

WIRE HANDLE  
Allows for the traction wire to be inserted into the metatarsal canal through the initial incision.

TRANSLATION DIAL  
Translates the metatarsal head by rotating the dial.

STABILIZATION SLEEVE  
Guides the traction wire in the metatarsal canal, stabilizing the guide.

PADDLE  
Positioned against the metatarsal head, assisting in translation.

Pecaplasty®

CE XMS01038-1

XMS01038-2 CE XXXXX  
(07)03700879513843(10)XXXXXX



LEARN MORE

**enovis**

T 800.495.2919 F 877.778.3864

Trilliant Surgical, LLC  
727 North Shepherd Drive | Suite 100 | Houston, TX 7707 | U.S.A.  
[enovis.com/foot-and-ankle](https://www.enovis.com/foot-and-ankle)

Copyright © 2023 Enovis Foot & Ankle  
MK-10483 Rev 00

Individual results may vary. Neither Trilliant Surgical, LLC nor any of the Enovis companies dispense medical advice. The contents of this document do not constitute medical, legal, or any other type of professional advice. Rather, please consult your healthcare professional for information on the courses of treatment, if any, which may be appropriate for you.